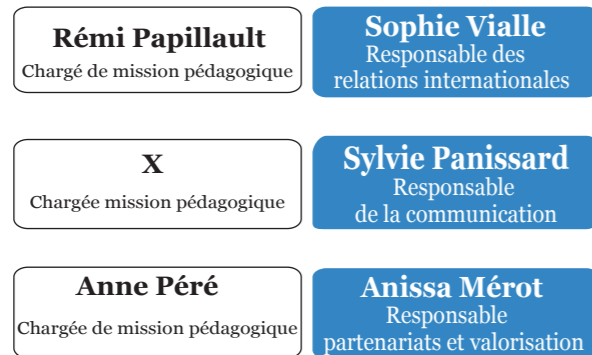
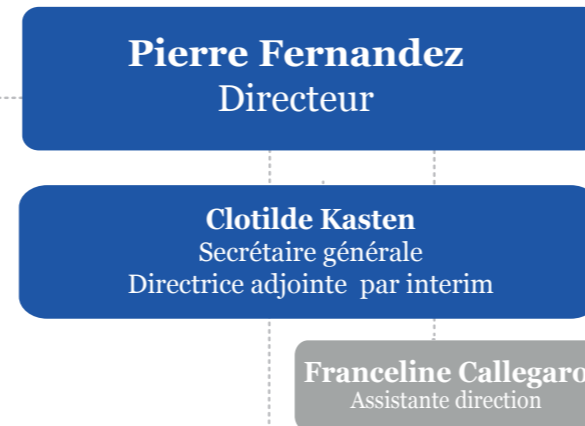


ORGANIGRAMME

PÔLE RELATIONS EXTERIEURES



DIRECTION



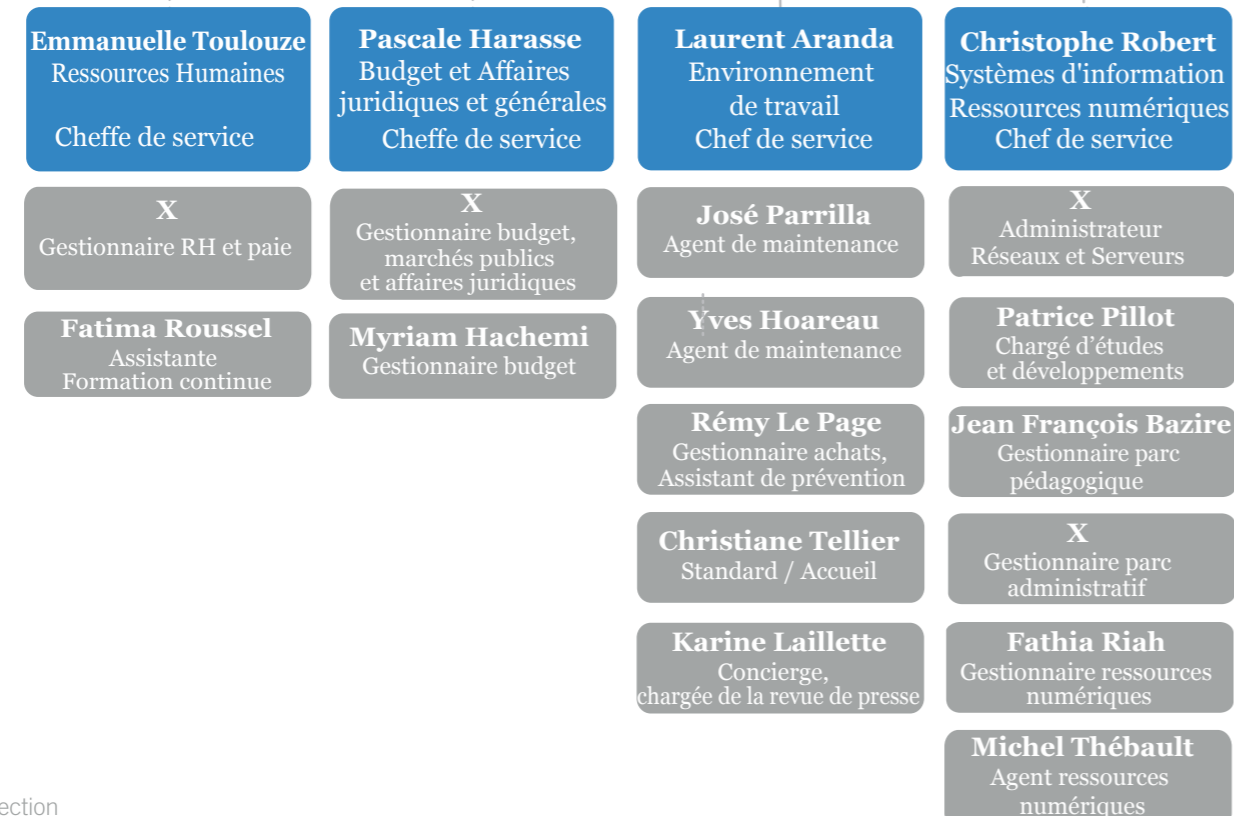
CONSEIL D'ADMINISTRATION



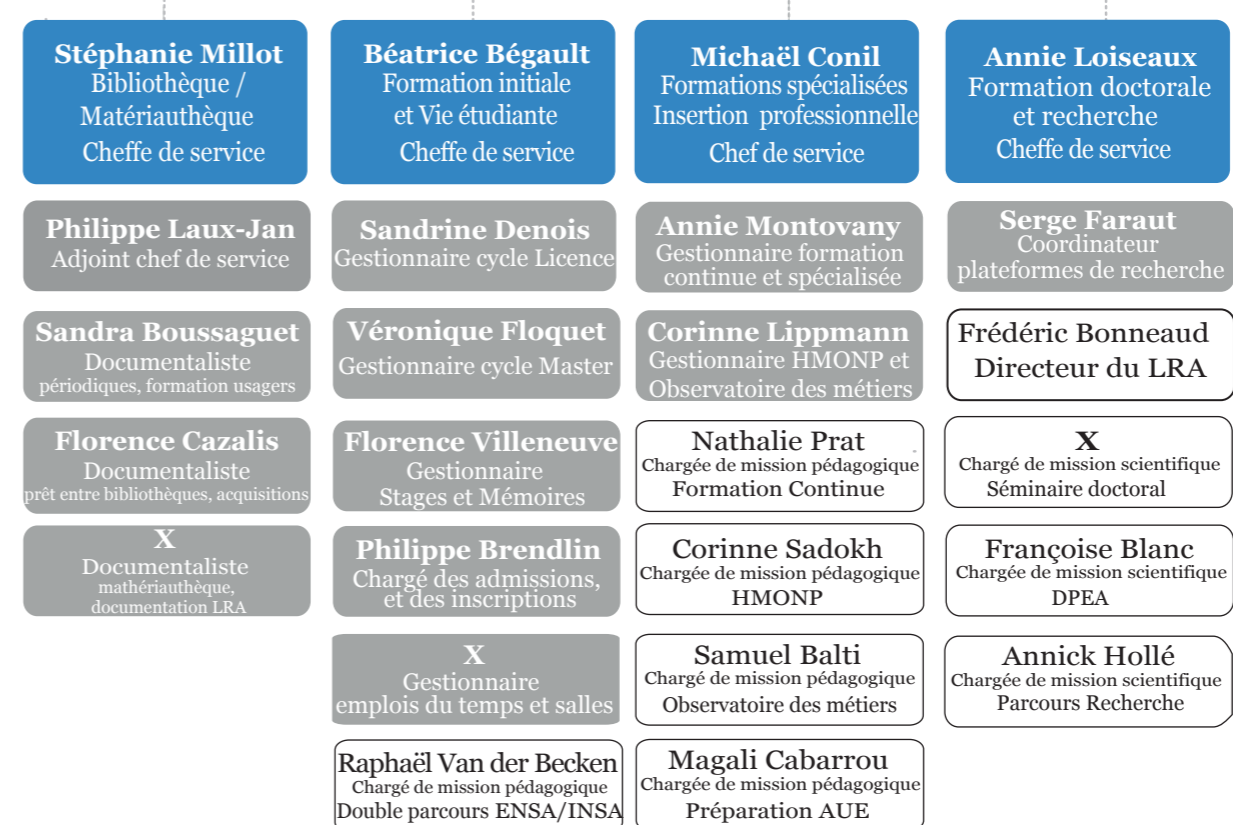
AGENCE COMPTABLE - SERVICE FACTURIER



ADMINISTRATION ET FINANCES



FORMATIONS ET RECHERCHE



- Direction
- Chefs de service
- Agents administratifs
- Enseignant(e)s chargé(e)s de missions